

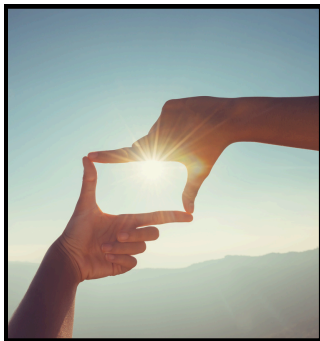
Series: Easter  
Passage: Luke 24:13-35  
Speaker: Pastor Jon

## THE LIFE CHALLENGE

### CONNECT

What's your favourite movie with a surprise ending?

OR Have you ever experienced a case of mistaken identity? What happened?



### IDENTITY

*Does God fail?* This was the question Pastor Jonathan answered with an "it depends". How should we measure God's success or failure? How do you think God looks at this or measures His success?

Pastor Jon told the crazy story of his engagement to Lauren. In the end, **everything spoke of his love**. How have you seen this in your life with your relationship with God? What are the things in your life that speak of His love for you?

### THE EXAMEN

What do you think is the difference between a bystander and a witness? How do we grow or shift from one to the other?

Which of the four steps do you feel most like you need right now? How do you think these things move us toward witness?

*Remember things are often cyclical (so no judgment)*

1. **Encounter**
2. **Perspective shift**
3. **Taste and See**
4. **Invite & Respond**



### PRACTICE: EMPASSIONED WITNESS

ROLE PLAY: Pair up (preferably not with your spouse). **Choose one scenario.**

1) Pretend that you are on a plane about to crash and your partner is the person next to you and has asked you *"What do you believe?"*

2) Pretend your partner is unsure about the validity of faith. They want to know *how has Jesus made a difference in your life.*

*Reverse roles and go again. (partners are encouraged to get into character)*

### PRAY TOGETHER

*If you are willing, share needs (or even struggles) with one another. Then pray together.*